

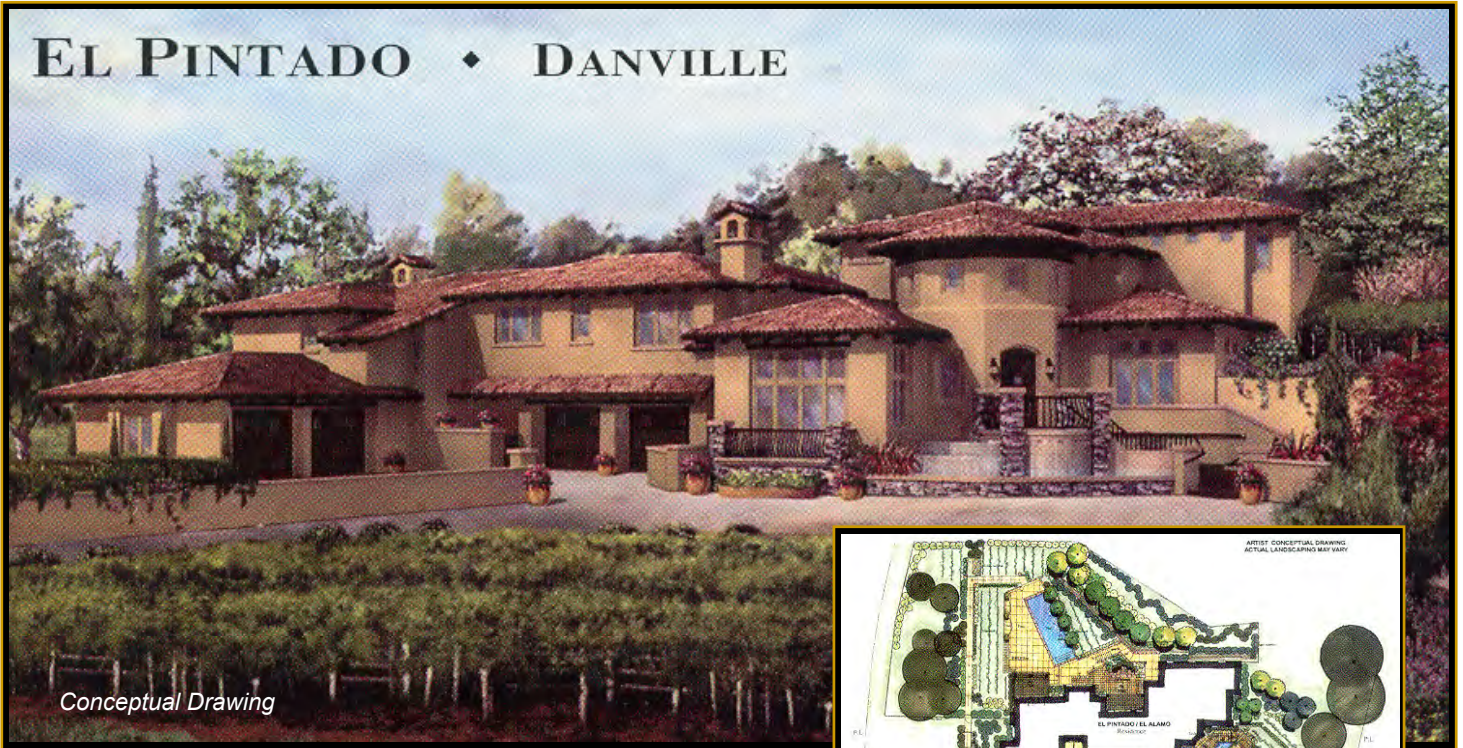


# TRADEMARK

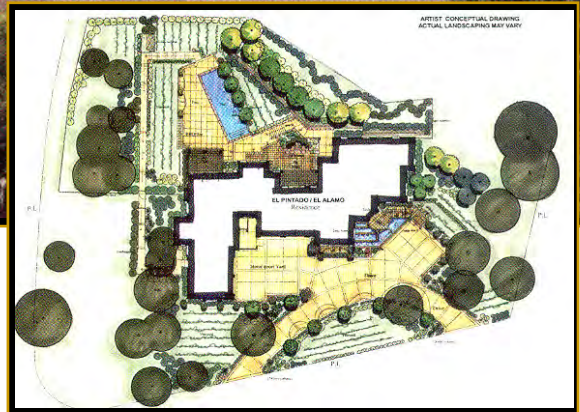
*Builder of Premier Properties*

# Homes

## EL PINTADO ♦ DANVILLE



Conceptual Drawing



## Casa de Monterey

Custom Home Site Awaits You!

- » Five Bedrooms / Six Full Baths ~ Two Half Baths
- » Study/Den can be 5th Bedroom w/Full Bathroom
- » Private Master Suite on it's own level
- » Large Theatre / Bonus Room
- » Stunning Gourmet Kitchen
- » Circular driveway & Fountain offers outstanding curb appeal
- » Four-car Garage and additional Storage area
- » Backyard to include: Pool, Loggia, BBQ and FP
- » Conditioned 3,000+ bottle underground Wine Cellar and Tasting Room
- » Convenience Elevator and Dumbwaiter
- » Quality custom details throughout: Knotty Alder doors, Box Beam ceiling Treatments, Oil rubbed Bronze hardware, Andersen windows and doors, dramatic waterfall at Front Entry, Two Laundry rooms and more...
- » Approximately 6,300+/- sf ~ Lot size: 2.35 +/- acres

Call for details.

### Directions

Driving from Walnut Creek:  
I-680 S towards San Jose. Exit El Pintado Road. Left turn on El Pintado Road. Vacant lot on corner of El Pintado Road and El Alamo. Easy access to I-680.

Driving from San Jose:  
I-680 N towards Walnut Creek/Sacramento. Exit El Cerro Blvd. East. Left turn onto El Pintado Road. Follow road to vacant lot on right—corner of El Pintado Road and El Alamo